

DEPARTMENT OF THE ARMY TECHNICAL MANUAL

ORGANIZATIONAL MAINTENANCE REPAIR PARTS AND
SPECIAL TOOLS LISTS

THEODOLITE: DIRECTIONAL; 0.002 MIL GRADUATION;
5.9-IN. LONG TELESCOPE; DETACHABLE TRIBRACH;
W/ACCESSORIES AND TRIPOD

(WILD HEERBRUGG MODEL T2-63 MIL) FSN 6675-983-8027

(WILD HEERBRUGG MODEL T2-67 MIL) FSN 6675-988-5225

(WILD HEERBRUGG MODEL T2-66-C MIL) FSN 6675-937-2954

Headquarters, Department of the Army, Washington, D. C.

25 June 1970

Current as of 25 November 1969

	Paragraph	Page
SECTION I. INTRODUCTION -----		iii
Scope -----	1	iii
General -----	2	iii
Explanation of columns -----	3	iii
Special information -----	4	iv
How to locate repair parts -----	5	v
Abbreviations -----	6	v
Federal supply codes for manufacturers -----	7	v
Recommendations for maintenance manual improvements -----	8	v
II. PRESCRIBED LOAD ALLOWANCE-----		
III. SPECIAL TOOLS, TEST AND SUPPORT EQUIPMENT FOR ORGANIZATIONAL MAINTENANCE -----		1
Group 26. Tools and Test Equipment		
2604 Special tools -----		1
SECTION IV. REPAIR PARTS FOR ORGANIZATIONAL MAINTENANCE		
Group 18. Body, Cab, Hood, Hull		
1808 Carrying cases -----		1
22. Accessories, Publications, Test Equipment and Tools		
2202 Accessory items -----		2
2207 Winterization equipment -----		3
67. Precision Instruments		
6702 Optics -----		3
6703 Mechanical, structural, and precision parts -----		4
6704 Batteries -----		5
6705 Lamps -----		5
6712 Mounted connecting devices -----		5
6713 Miscellaneous wiring and fittings -----		5
6717 Power supply -----		6
6719 Tripods -----		6
95. General Use Standardized Parts		
9501 Bulk material -----		9
99. Parts Peculiar		
9901 Multi-listed parts -----		9
SECTION V. FEDERAL STOCK NUMBER AND REFERENCE NUMBER INDEX -----		20

*This manual together with TM 5-6675-233-35P, 25 June 1970, supersedes TM 5-6675-233-25P, 4 September 1963, including all changes.

CHANGE }
NO. 1 }

HEADQUARTERS
DEPARTMENT OF THE ARMY
WASHINGTON, D.C., 26 February 1993

Organizational Maintenance Repair Parts and
Special Tools Lists

**THEODOLITE: DIRECTIONAL; 0.002 MIL GRADUATION;
5.9-IN. LONG TELESCOPE; DETACHABLE TRIBRACH;
W/ACCESSORIES AND TRIPOD
(WILD HEERBRUGG MODEL T2-63 MIL) FSN 6675-983-8027
(WILD HEERBRUGG MODEL T2-67 MIL) FSN 6675-988-5225
(WILD HEERBRUGG MODEL T2-66-C MIL) FSN 6675-937-2954**

DISTRIBUTION STATEMENT A: Approved for public release; distribution is unlimited

TM 5-6675-233-20P, 25 June 1970, is changed as follows:

Page v, Paragraph 8. Lines 6 through 8 should be changed to read: Commander, U.S. Army Aviation and Troop Command, AITN: AMSAT-I-MTS, 4300 Goodfellow Blvd., St. Louis, MO 63120-1798.

Page 6. Delete the following in their entirety:

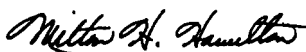
Line 00133	FSN 6115-937-4118	Battery, Dummy: Wood	EA	2
Line 00134		Axle: Dummy Battery	EA	2
Line 00135		Dummy, Battery	EA	2
Line 00136		Nut: Dummy Rod	EA	2
Line 00137		Washer: Dummy Rod	EA	2

All changes, additions, or deletions of Federal Stock Number or Manufacturer's Code and Part Numbers within this change should be appropriately reflected in the index.

By Order of the Secretary of the Army:

GORDON R. SULLIVAN
General, United States Army
Chief of Staff

Official:


MILTON H. HAMILTON
*Administrative Assistant to the
Secretary of the Army*
03684

DISTRIBUTION:

To be distributed in accordance with DA Form 12-25-E, block no. 1850, requirements for
TM 5-6675-233-20P.

SECTION I

INTRODUCTION

1. Scope

This manual lists repair parts and special tools required for the performance of organizational maintenance of the theodolite.

2. General

a. The Repair Parts List is arranged as follows:

(1) Individual parts and major assemblies are listed alphabetically by item name within the numbered functional groups.

(2) Assembly components and subassemblies are indented and listed alphabetically by item name under major assemblies.

b. This Repair Parts and Special Tools List is divided into the following sections:

(1) *Prescribed Load Allowance (PLA)-Section II.* A consolidated listing of repair parts quantitatively allocated for initial stockage at the organizational level. *This is a mandatory stockage allowance.*

(2) *Special Tools, Test and Support Equipment-Section III.* A list of special tools, test and support equipment authorized for the performance of maintenance at the organizational level.

(3) *Repair Parts-Section IV.* A list of repair parts authorized for the performance of maintenance at the organizational level.

(4) *Federal Stock Number and Reference Number Index—Section V.* A list of Federal Stock Numbers followed by reference numbers in ascending alpha-numeric sequence, cross-referenced to index number.

3. Explanation of Columns

The following provides an explanation of columns in the tabular lists in sections II, III, and IV:

a. *Source, Maintenance and Recoverability Codes (SMR):*

(1) Source code indicates the selection status and source for the listed item. Source codes are:

	Explanation
P	Applied to repair parts which are stocked in or supplied from DSA/GSA or Army supply system, and authorized for use at indicated maintenance categories.
M	Applied to repair parts which are not procured or stocked but are to be manufactured at indicated maintenance categories.
A	Applied to assemblies which are not procured or stocked as such but are made up of two or more units, each of which carry individual stock numbers and descriptions and are procured and stocked and can be assembled by units at indicated maintenance categories.
X	Applied to parts and assemblies which are not procured or stocked, the mortality of which is normally below that of the applicable end item, and the failure of which should result in retirement of the end item from the supply system.
X1	Applied to repair parts which are not procured or stocked, the requirement for which will be supplied by use of the next higher assembly or components.
X2	Applied to repair parts which are not stocked. The indicated maintenance category requiring such repair parts will attempt to obtain them through cannibalization; if not obtainable through cannibalization, such repair parts will be requisitioned with supporting justification through normal supply channels.
G	Applied to major assemblies that are procured with PEMA (Procurement Equipment Missile Army) funds for initial issue only to be used as exchange assemblies at DSU and GSU maintenance level. These assemblies will not be stocked above DSU and GSU or returned to depot supply level. <i>Note.</i> Source code is not shown on common hardware items known to be readily available in Army supply channels and through local procurement.

(2) Maintenance code indicates the lowest category of maintenance authorized to install the listed item. The maintenance level code is:

Code	Explanation
O - -	Organizational Maintenance

(3) Recoverability code indicates whether un-serviceable items should be returned for recovery

or salvage. Items not coded are expendable. Recoverability codes are;

Code	Explanation
R	Applied to repair parts and assemblies which are economically repairable at DSU and GSU activities and normally are furnished by supply on an exchange basis.
T	Applied to high dollar value recoverable repair parts which are subject to special handling and are issued on an exchange basis. Such repair parts normally are repaired or overhauled at depot maintenance activities.
U	Applied to repair parts specifically selected for salvage by reclamation units because of precious metal content, critical materials, high dollar value reusable casings or castings.

(4) This column also lists, below the SMR code, an index number for each item in ascending numerical sequence, which is used to locate items in the publication when the Federal stock number and/or reference number is known.

b. Federal Stock Number. This column indicates the Federal stock number for the item.

c. Description. This column indicates the Federal item name and any additional description of the item required. A part number or other reference number is followed by the applicable five-digit Federal supply code for manufacturers in parentheses. Material required for manufacture or fabrication is identified.

d. Unit of Issue. This column indicates the unit used as a basis for issue, e.g., ea, pr, ft, yd, etc.

e. Quantity Incorporated in Unit. This column indicates the quantity of the item used in the functional group.

f. Fifteen-Day Organizational Maintenance Allowance, Column (4) of Section II and Column (7) of Section III and IV.

(1) The allowance columns are divided into four subcolumns. Indicated in each subcolumn opposite the first appearance of each item is the total quantity of items authorized for the number of equipments supported. Subsequent appearances of the same item will have no entry in the allowance columns but will have in the description column a reference to the first appearance of the item. Items authorized for use as required but not for initial stockage are identified with an asterisk in the allowance column.

(2) The quantitative allowances for organizational level of maintenance represents one initial prescribed load for a 15-day period for the number of equipments supported. Units and organizations authorized additional prescribed loads will multiply the number of prescribed loads authorized by the quantity of repair parts reflected in the appropriate density column applicable

to the number of items supported to obtain the total quantity of repair parts authorized.

(3) Organizational units providing maintenance for more than 100 of these equipments shall determine the total quantity of parts required by converting the equipment quantity to a decimal factor by placing a decimal point before the next to last digit of the number to indicate hundredths, and multiplying the decimal factory by the parts quantity authorized in the 51-100 allowance column. Example, authorized allowance for 51-100 equipments is 40; for 150 equipments multiply 40 by 1.50 or 60 parts required.

(4) Subsequent changes to allowances will be limited as follows: No change in the range of items is authorized. If additional items are considered necessary, recommendation should be forwarded, to U. S. Army Mobility Equipment Command for exception or revision to the allowance list. Revisions to the range of items authorized will be made by this Command based upon engineering experience, demand data, or TAERS information.

g. Illustration, Column (8). This column is divided as follows:

(1) *Figure number, column (8) (a).* Indicates the figure number of the illustration in which the item is shown.

(2) *Item number, column (8) (b).* Indicates the callout number used to reference the item in the illustration.

4. Special Information

a. Identifications of the usable on codes included in column (2) of Section II and column (3) of Sections III and IV of this publication are:

Code	USed on
A --	(WILD HEERBRUGG MODEL T2-63 MIL) FSN 6675-983-8027
B --	(WILD HEERBRUGG MODEL T2-63 MIL) Serial number range 100656, 100934 thru 100963, 101084 thru 101112 FSN 6675-988- 5225
C --	(WILD HEERBRUGG MODEL T2-66-C MIL) FSN 6675-937-2954
D --	(WILD HEERBRUGG MODEL T2-67 MIL) Serial number range 111285 thru 111309, 111585 thru 111607 FSN 6675-988-5225

Repair parts not symbolized are applicable to all end items and serial number ranges covered in this manual.

b. Repair parts mortality has been based on 1,000 hours of operation per year.

c. Parts which require manufacture or assembly at a category higher than that authorized for in-

stallation will indicate in the source column the higher category.

d. The following publications pertain to the theodolite and its components:

TM 5-6675- 233-15	Operator, Organizational, DS, GS, and depot maintenance manual.
TM 5-6675- 233-35P	Direct and General Support and Depot Maintenance Repair Parts and Special Tools List

5. How to Locate Repair Parts

a. When Federal stock number or reference number is unknown:

(1) *First.* Using the table of contents, determine the functional group within which the repair part belongs.

(2) *Second.* Find the illustration covering the functional group to which the repair part belongs.

(3) *Third.* Identify the repair part on the illustration, and note the illustration figure and item number of the repair part.

(4) *Fourth.* Using the Repair Parts Listing, find the functional group to which the repair part belongs and locate the illustration figure and item number noted on the illustration.

b. When Federal stock number or reference number is known:

(1) *First.* Using the Index of Federal Stock Numbers and Reference Numbers, find the pertinent Federal Stock Number or Reference Number.

This index is in ascending alpha-numeric sequence cross-referenced to an index number.

(2) *Second.* Using the Repair Part Listing, find the index number referenced in the index of Federal Stock Numbers and Reference Numbers.

6. Abbreviations

cc	-----	centimeter
ea	-----	each
ft.	-----	feet
gr	-----	group
mtg	-----	mounting
v	-----	volt
yd	-----	yard

7. Federal Supply Codes for Manufacturers

Code	Manufacturer
09786 ---	Ordnance Supply Office
81348 ---	Federal Specifications Promulgated by General Services Administration
81349 ---	Military Specifications Promulgated by Standardization Div. Directorate of Logistic Services DSA
89905 ---	Wild Heerbrugg Instruments, Inc.
96906 ---	Military Standards Promulgated by Standardization Div. Directorate of Logistic Services DSA

8. Recommendations for Maintenance Manual Improvements

Report of errors, omissions, and recommendations for improving this publication by the individual user is encouraged. Reports should be submitted on DA Form 2028 (Recommended Changes to Publications) and forwarded direct to the: Commanding General, U. S. Army Mobility Equipment Command, ATTN: AMSME-MPP, 4300 Goodfellow Boulevard, St. Louis, Mo. 63120.

SECTION II. PRESCRIBED LOAD ALLOWANCE
(1) (2)

FEDERAL STOCK NUMBER	DESCRIPTION	USABLE ON CODE	(3) 15-DAY ORGANIZATIONAL MAINTENANCE ALLOWANCE			
			(A) 1-5	(B) 6-20	(C) 21-50	(D) 51-100
	GROUP 26 - TOOLS AND TEST EQUIPMENT					
	2604 - SPECIAL TOOLS					
5120-378-9520	WRENCH, TRIPOD				1	1
5120-961-2761	SCREWDRIVER, FLAT TIP				1	1
6675-353-4103	PIN, ADJUSTING				1	1
	GROUP 18 - BODY, CAB, HOOD, HULL					
	1808 - CARRYING CASES					
6675-353-4123	HAVERSACK				1	1
	GROUP 22 - ACCESSORIES, PUBLICATIONS, TEST EQUIPMENT AND TOOLS					
	2202 - ACCESSORY ITEMS					
5210-238-3299	PUMP BOB ASSEMBLY				1	1
6675-378-9401	COVER, INSTRUMENT				1	1
6675-446-1762	CONTAINER, GREASE				1	1
6675-980-0118	CASE, ACCESSORY				1	1
7920-205-0565	BRUSH, DUSTING, WATCHMAKERS				1	1
8330-965-1722	CHAMOIS, LEATHER				1	1
	2207 - WINTERIZATION EQUIPMENT					
6675-953-0013	WINTERIZATION KIT, THEOLOLITE				1	1
	GROUP 67 - PRECISION INSTRUMENTS					
	6703 - MECHANICAL, STRUCTURAL, AND PRECISION PARTS					
1440-961-9686	ADAPTER, EYEPIECE ASSEMBLY				1	1
	6704 - BATTERIES					
6135-120-1020	BATTERY, DRY		1	4	8	17
	6705 - LAMPS					
6240-269-0929	LAMP, INCANDESCENT		1	3	5	10
6240-775-6399	LAMP, INCANDESCENT		1	3	5	10
6675-863-7471	FITTING, LAMP				1	1
	6717 - POWER SUPPLY					
6135-937-4118	BATTERY, DUMMY					1
6150-378-9500	LEAD, ELECTRICAL				1	1
	GROUP 99 - PARTS PECULIAR					
	9901 - MULTI-LISTED PARTS					
6675-859-5936	LAMP, BATTERY BOX		1	4	8	16

(1)	(2)	(3)	(4)	(5)	(6)				(7)		
SMR CODE	FEDERAL STOCK NUMBER	DESCRIPTION REF NUMBER & MFR CODE	USABLE ON CODE	UNIT OF MEAS	QTY INC IN UNIT	15-DAY ORGANIZATIONAL MAINTENANCE ALW				ILLUS- TRATION	(B)
						(A)	(B)	(C)	(D)	(A) FIG NO	(B) ITEM NO
		SECTION III - SPECIAL TOOLS, TEST AND SUPPORT EQUIPMENT FOR ORGANIZATIONAL MAINTENANCE									
00001		GROUP 26 - TOOLS AND TEST EQUIPMENT									
00002		2604 - SPECIAL TOOLS									
P 0 00003	6675-353-4103	PIN, ADJUSTING: SURVEYING INSTRUMENT 3A55 (89905)		EA	2	*	*	1	1	2	7
P 0 00004	5120-961-2761	SCREWDRIVER, FLAT TIP HDW1-2 (89905)		EA	1	*	*	1	1	2	8
P 0 00005	5120-378-9520	WRENCH, TRIPOD 3A29 (89905)		EA	1	*	*	1	1	3	2
		SECTION IV - REPAIR PARTS FOR ORGANIZATIONAL MAINTENANCE									
00006		GROUP 18 - BODY, CAB, HOOD, HULL									
00007		1808 - CARRYING CASES									
X2 0 00008		CASE, SHIPPING NT2-571 (89905)		EA	1					2	13
X2 0 00009		CASE SUBASSEMBLY: BASE XT21-108MIL (89905)		EA	1						
X1 00010		BASE ASSEMBLY T21-201A142A (89905)		EA	1						
X1 00011		BASE T21-201A (89905)		EA	1					1	7
X1 00012		BOLT: BASE TO LEVER T21-142A (89905)		EA	3					1	9
X1 00013		PIN: BOLT RETAINING VSN12770-2-5X24 (89905)		EA	3					1	8
X2 0 00014		COLLAR, GROUND PLATE: HOOD GASKET NT2-284A (89905)		EA	1					1	6
X2 0 00015		COLLAR: HOOD GASKET RETAINING NT2-295A (89905)		EA	1					1	5
X2 0 00016		LEVER, GROUND PLATE NT2-283 (89905)		EA	3					1	10
X2 0 00017		NUT: LEVER LOCKING T21-143A (89905)		EA	3					1	13
X2 0 00018		SCREW: COLLAR MTG DIN63-2X5 (89905)		EA	6					1	20
X2 0 00019		SCREW, MACHINE: NUT RETAINING CB18-3LX4-7 (89905)		EA	3					1	1
X2 0 00020		WASHER, GROUND PLATE LT405 (89905)		EA	3					1	12
X2 0 00021		WASHER, SPRING: LOCK BOLT HDT1-11 (89905)		EA	3					1	11
X2 0 00022		CATCH SPRING: HOOD TO BASE TO-463A (89905)		EA	2					1	21
X2 0 00023		STRAP, CARRYING, THEODOLITE NT2-294A (89905)		EA	1					1	3
X2 0 00024		WASHER, STRAP RIVET 6X3-2X0-5 (89905)		EA EA	6 6					1 1	17 17
X2 0 00025		CONTAINER GROUND PLATE NT1-893 (89905)		EA	1					1	2

(1) SMR CODE	(2) FEDERAL STOCK NUMBER	(3) DESCRIPTION REF NUMBER & MFR CODE	(4) USABLE ON CODE	(5) UNIT OF MEAS	(6) 15-DAY ORGANIZATIONAL MAINTENANCE ALW				(7) ILLUS- TRATION		
					QTY INC IN UNIT	(A) 1-5	(B) 6-20	(C) 21-50	(D) 51-100	(A) FIG NO	(B) ITEM NO
X1 00026		SCREEN, CONTAINER NT1-894 (89905)		EA	1					1	14
X1 00027		WINDOW, CONTAINER NT1-895 (89905)		EA	1					1	15
P 0 00028	6675-353-4123	HAVERSACK HDS1-2 (89905)		EA	1	*	*	1	1	2	12
X2 0 00029		HOOD, THEODOLITE XT2-68 (89905)		EA	1						
X1 00030		HOOD ASSEMBLY: THEODOLITE NT2-291B (89905)		EA	1					1	4
X2 0 00031		LEVER, LOCK: HOOD TO BASE T0-462 (89905)		EA	2					1	18
X2 0 00032		PIN, LOCK: LEVER AND SPRING T0-464 (89905)		EA	4					1	19
X2 0 00033		RIVET: STRAP DIN674-3X7 (89905)		EA	6					1	16
00034		GROUP 22 - ACCESSORIES, PUBLICATIONS, TEST EQUIPMENT AND TOOLS									
00035		2202 - ACCESSORY ITEMS									
X2 0 00036		ACCESSORY AND TOOL KIT XT21-109MIL (89905)		EA	1						
P 0 00037	7920-205-0565	BRUSH, DUSTING, WATCHMAKERS MILB43363 (81349)		EA	1	*	*	1	1	2	9
P 0 00038	6675-980-0118	CASE, ACCESSORY T21-251G (89905)		EA	1	*	*	1	1	2	3
P 0 00039	8330-965-1722	CHAMOIS, LEATHER KKC300 (81348)		EA	1	*	*	1	1	2	10
P 0 00040	6675-446-1762	CONTAINER, GREASE HDF3-4 (89905)		EA	1	*	*	1	1	2	11
P 0 00041	6675-378-9401	COVER, INSTRUMENT: PLASTIC NT2-549 (89905)		EA	1	*	*	1	1	2	4
P 0 00042	6675-980-0117	EYEPIECE ASSEMBLY, OPTICAL INSTRUMENT: MICROSCOP DIAGONAL GZ0M2-00000 (89905)		EA	1			SEE	GRP	6702	
P 0 00043	6675-980-0116	EYEPIECE ASSEMBLY TELESCOPE, DIAGONAL GZ0F00000 (89905)		EA	1			SEE	GRP	6702	
P 0 00044	6675-863-7471	FITTING, LAMP T21-4W (89905)		EA	2			SEE	GRP	6705	
P 0 00045	6675-353-4103	PIN, ADJUSTING: SURVIEYING INSTRUMENT 3A55 (89905)		EA	2			SEE	GRP	2604	
P 0 00046	5120-961-2761	SCREWDRIVER, FLAT TIP HDW1-2 (89905)		EA	1			SEE	GRP	2604	
P 0 00047	6675-980-0115	SUNGLASS FILTER ASSEMBLY: BLACK GOF4-00000 (89905)		EA	1			SEE	GRP	6702	
X2 0 00048		BAYONET: PLUMB BOB ATTACHING 3A54B (89905)		EA	1					3	1
X2 0 00049		RING, SOCKET: PLUMB BOB CORD 3A56 (89905)		EA	1					3	4
X2 0 00050		KIT, TRIPOD TOOL 2A20A23A (89905)		EA	1						
X1 00051		BRACKET: TOOL KIT MTG 2A23A (89905)		EA	2					6	46

(1) SMR CODE	(2) FEDERAL STOCK NUMBER	(3) DESCRIPTION REF NUMBER & MFR CODE	(4) USABLE ON CODE	(5) UNIT OF MEAS	(6) QTY INC IN UNIT	(6) 15-DAY ORGANIZATIONAL MAINTENANCE ALW				(7) ILLUS- TRATION (A) (B)	
						(A) 1-5	(B) 6-20	(C) 21-50	(D) 51-100	(A) FIG NO	(B) ITEM NO
X1 00052		KIT, TOOL 2A20A (89905)		EA	1					34	33
X2 0 00053		RIVET: TOOL KIT TO BRACKET DIN7331A4X11X10 (89905)		EA	4					6	47
X2 0 00054		WASHER, TOOL KIT TO BRACKET 12-3-2X1 (89905)		EA	4					6	34
P 0 00055	5210-238-3299	PLUMB BOB ASSEMBLY XT2-35A (89905)		EA	1	*	*	1	1		
M 0 00056		CORD, PLUMB BOB MANUFACTURE FROM:		EA	1					3	3
P 0 00057	4020-270-1659	CORD, LINES (8 FT REQUIRED)		YD			SEE	GRP	9501		
X2 0 00058	9150-252-6382	LUBRICATING OIL, WATCH: OCW, 5CC BOTTLE		EA	1						
X1 00059		PLUMB BOB 12B27A28 (89905)		EA	1					3	6
X2 0 00060		SLIDE, PLUMB BOB: CORD 3A39A (89905)		EA	1					3	5
X2 0 00061		SCREW, WOOD: TOOL KIT MTG VSM12802-2-6X12 (89905)		EA	4					6	28
00062		2207 - WINTERIZATION EQUIPMENT									
P 0 00063	6675-953-0013	WINTERIZATION KIT, TEODOLITE WK2ASSY (89905)		EA	1	*	*	1	1	7	
X1 00064		CAP, MICROSCOPE EYEPIECE WK2ME (89905)		EA	1					7	5
X1 00065		CAP, OPTICAL PLUMBING EYEPIECE WK20P (89905)		EA	1					7	3
X1 00066		CAP, TELESCOPE EYEPIECE WK2TE (89905)		EA	1					7	4
X1 00067		CASE, WINTERIZATION KIT WK2CC (89905)		EA	1					7	1
X1 00068		COVER, HORIZONTAL CLAMP WK2HC (89905)		EA	1					7	6
X1 00069		COVER, INVERTER KNOB WK2CP (89905)		EA	2					7	8
X1 00070		COVER, LEVELING SCREW WK2FS (89905)		EA	3					7	9
X1 00071		COVER, MICROSCOPE KNOB WK2MM (89905)		EA	1					7	7
X1 00072		COVER, SLOW-MOTION SCREW WK2SM (89905)		EA	3					7	2
X1 00073		COVER, TELESCOPE CLAMP WK2VC (89905)		EA	1					7	10
00074		GROUP 67 - PRECISION INSTRUMENTS									
00075		6702 - OPTICS									
P 0 00076	6675-980-0117	EYEPIECE ASSEMBLY, OPTICAL INSTRUMENT: MICROSCOPE DIAGONAL GZ0M2-00000 (89905)		EA	1	*	*	*	*	2	1
X1 00077		CONNECT ASSEMBLY, HEAD GZ0M2-04000 (89905)•u		EA	1						

(1) SMR CODE	(2) FEDERAL STOCK NUMBER	(3) DESCRIPTION REF NUMBER & MFR CODE	USABLE ON CODE	(4) UNIT OF MEAS	(5) QTY INC IN UNIT	(6) 15-DAY ORGANIZATIONAL MAINTENANCE ALW				(7) ILLUS- TRATION	
						(A) 1-5	(B) 6-20	(C) 21-50	(D) 51-100	(A) FIG NO	(B) ITEM NO
X1 00078		HEAD, CONNECT GZUM2-01010 (89905)		EA	1						
X1 00079		LEVER, LOCK T1-258 (89905)		EA	1						
X1 00080		LOCKSCREW: LEVER GZOM1-04010 (89905)		EA	1						
X1 00081		PIN, SHOULDER, HEADLESS, LEVER VSM12770-1X5 (89905)		EA	1						
P 0 00082	6675-980-0116	EYEPIECE ASSEMBLY, TELESCOPE, DIAGONAL GZOF00000 (89905)		EA	1	*	*	*	*	2	2
X1 00083		CONNECT ASSEMBLY, HEAD GZOF040000 (89905)		EA	1						
X1 00084		BUSHING, CONNECT GZOF04040 (89905)		EA	1						
X1 00085		HEAD, CONNECT GZOF04011 (89905)		EA	1						
X1 00086		SLEEVE, CENTERING GZ004020 (89905)		EA	1						
X1 00087		SPRING: SLEEVE LOCK GZOF04030 (89905)		EA	1						
P 0 00088	6675-413-2446	MIRROR, FROSTED, ILLUMINATION NT2-58A59B60A (89905)		EA	2	*	*	*	*		
X1 00089		MOUNT, MIRROR NT2-59B (89905)		EA	2						
X1 00090		SLEEVE, MIRROR NT2-58A (89905)		EA	2						
P 0 00091	6675-979-8744	SUNSHADE, OBJECTIVE GSB2 (89905)		EA	1		SEE	GRP	6703		
P 0 00092	6675-980-0115	SUNGLASS FILTER ASSEMBLY: BLACK GOF4-00000 (89905)		EA	1	*	*	*	*	2	5
X1 00093		HOUSING, SUNGLASS GOF1-00000 (89905)		EA	1						
X1 00094		SUNGLASS, BLACK GOF1-00050 (89905)		EA	1						
00095		6703 - MECHANICAL, STRUCTURAL, AND PRECISION PARTS									
P 0 00096	1440-961-9686	ADAPTER, EYEPIECE ASSEMBLY 10102202 (09786)	B	EA	1	*	*	1	1	5	
X1 00097		CONNECTOR 10102204 (09786)	B	EA	1					5	3
X1 00098		HOLDER, LAMP 10010918 (09786)	B	EA	1						
X1 00099		RING 10010898 (09786)	B B	EA EA	1 1						
X1 00100		RING 10102205 (09786)	B	EA	1					5	4
X1 00101		SCREW, CAP 1012206 (09786)	B	EA	1					5	2
X1 00102		SLEEVE 10010897 (09786)	B	EA	1						
X1 00103		SLEEVE 10102203 (09786)	B	EA	1					5	1

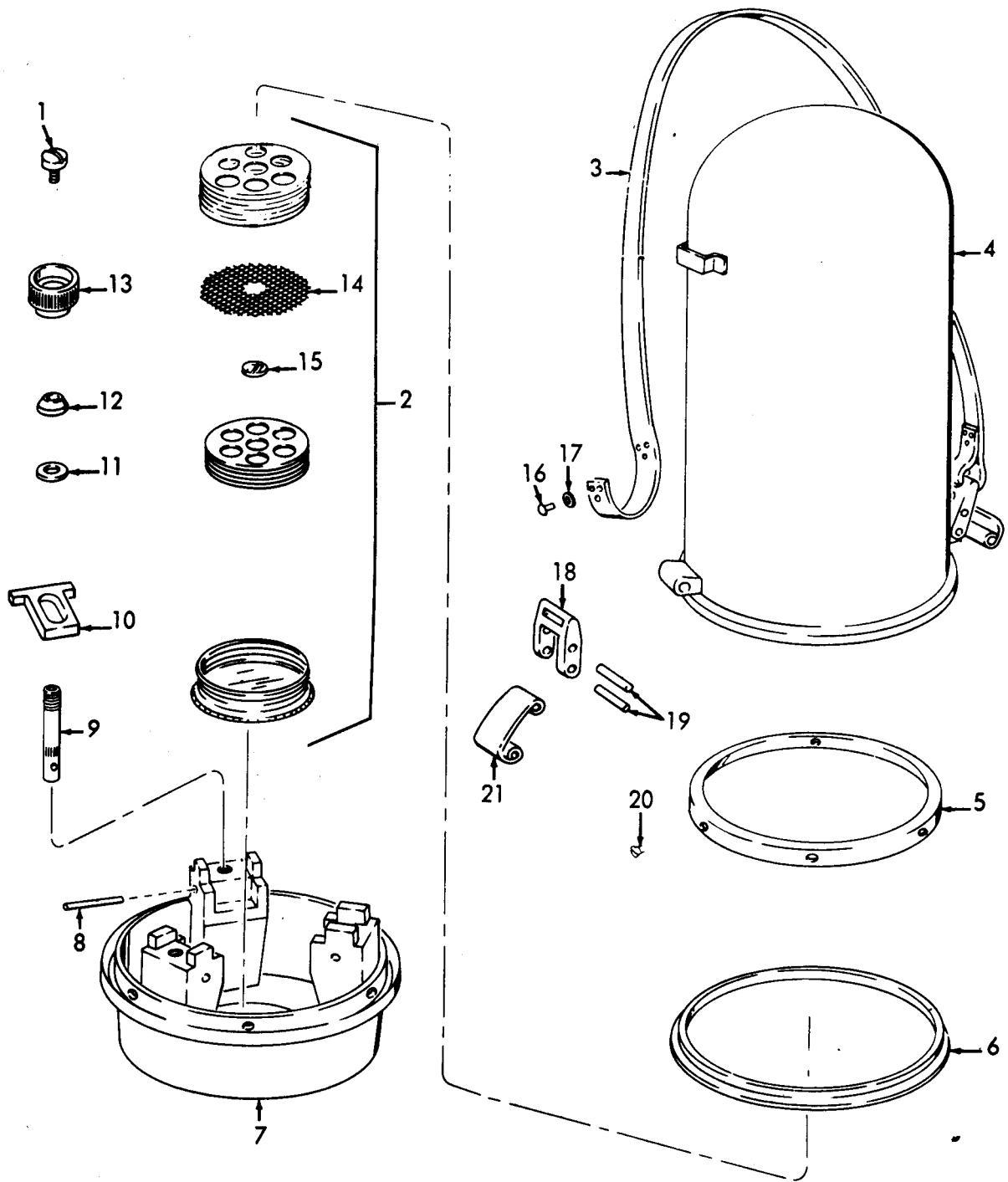
(1) SMR CODE	(2) FEDERAL STOCK NUMBER	(3) DESCRIPTION REF NUMBER & MFR CODE	(4) USABLE ON CODE	(5) UNIT OF MEAS	(6) QTY INC IN UNIT	(6) 15-DAY ORGANIZATIONAL MAINTENANCE ALW				(7) ILLUS- TRATION (A) FIG NO	
						(A)	(B)	(C)	(D)	(A) FIG NO	(B) ITEM NO
X1 00104		SOCKET ASSEMBLY 10010896 (09786)	B	EA	1					5	6
X2 0 00105		CLAMP ASSEMBLY 10017416 (09786)	B	EA	1					4	
X1 00106		BLOCK 10017414 (09786)	B	EA	1					4	3
X1 00107		SCREW MS51957-15 (96906)	B	EA	1					4	1
X1 00108		YOKE 10017417 (09786)	B	EA	1					4	2
X2 0 00109		CLUTCH FOOT: TRIBRACH MTG T21-55 (89905)		EA	3						
P 0 00110	6675-966-5788	LEVELING BASE, THEODOLITE T21-2A59MIL (89905)		EA	1	*	*	*	*		
P 0 00111	6675-979-8744	SUNSHADE, OBJECTIVE GSB2 (89905)	AD	EA	1	*	*	*	*		
		6704 - BATTERIES									
P 0 00113	6135-120-1020	BATTERY, DRY: 1.5V		EA	4	1	4	8	17		
		6705 - LAMPS									
P 0 00115	6675-863-7471	FITTING, LAMP T21-4W (89905)		EA	2	*	*	1	1	2	6
X1 00116		BUSHING, INSULATION T21-135 (89905)		EA	8						
X1 00117		HOUSING T2-635F (89905)		EA	2						
X1 00118		HOUSING, LAMP T21-131 (89905)		EA	2						
P 0 00119	6675-859-5936	LAMP, BATTERY, BOX: FITTING HEG3-64 (89905)		EA	2		SEE	GRP	9901		
X1 00120		SOCKET, LAMP T2-636 (89905)		EA	2						
P 0 00121	6675-859-5936	LAMP, BATTERY BOX: SPARE HEG3-64 (89905)		EA	4	SEE	GRP	9901		5	5
P 0 00122	6240-269-0929	LAMP, INCANDESCENT MS15611-5 (96906)	B	EA	1	1	3	5	10	5	5
P 0 00123	6240-775-6399	LAMP, INCANDESCENT 10009795 (09786)	B	EA	1	1	3	5	10		
P 0 00124	6675-378-9501	LIGHT, HAND XT2-73 (89905)		EA	1	*	*	*	*		
P 0 00125	6675-859-5936	LAMP, BATTERY BOX: HAND LIGHT HEG3-64 (89905)		EA	1		SEE	GRP	9901		
		6712 - MOUNTED CONNECTING DEVICES									
X2 0 00127		BUSHING, ILLUMINATION SOCKET T21-65 (89905)		EA	1						
		6713 - MISCELLANEOUS WIRING AND FITTINGS									
P 0 00129	1440-936-8272	CABLE 10194010 (09786)	B	EA	2	*	*	*	*	5	7
X2 0 00130		PLUG, MALE EB125 (89905)	B	EA	2					5	8

(1) SMR CODE	(2) FEDERAL STOCK NUMBER	(3) DESCRIPTION REF NUMBER & MFR CODE	(4) USABLE ON CODE	(5) UNIT OF MEAS	(6) 15-DAY ORGANIZATIONAL MAINTENANCE ALW				(7) ILLUS- TRATION	
					QTY INC IN UNIT	(A)	(B)	(C)	(D)	(A) FIG NO
00131		6717 - POWER SUPPLY								
P 0 00132	6675-378-9502	BATTERY BOX XT2-74 (89905)		EA	1	*	*	*	*	
X1 00138		INSULATION, PLATE: CONTACT SPRING EB306A (89905)		EA	1					
X1 00139		KNOB, COVERPLATE CONTACT EB303 (89905)		EA	1					
P 0 00140	6675-859-5936	LAMP, BATTERY BOX: SPARE HEG3-64 (89905)		EA	4		SEE	GRP	6705	
X1 00141		LEVER, PLATE EB302 (89905)		EA	1					
X2 0 00142		BRACKET, BATTERY BOX 21B19 (89905)		EA	1				6	35
P 0 00143	6150-378-9500	LEAD, ELECTRICAL: POWER SUPPLY XT2-72 (89905)		EA	1	*	*	1	1	
X2 0 00144		SCREW, WOOD: BRACKET MTG VSM12801-3X20 (89905)		EA	2					
00145		6719 - TRIPODS								
X2 0 00146		TIPOD, SURVEYING 21BMIL63 (89905)		EA	1					
X2 0 00147		HEAD ASSEMBLY, TRIPOD XT2-75MIL63 (89905)		EA	1					
X2 0 00148		BOLT, MACHINE: HOUSING CLAMPING BA1-8X17 (89905)		EA	6				6	8
X2 0 00149		CLAMP, LEG 3A11 (89905)		EA	2				6	16
X2 0 00150		HEAD ASSEMBLY, TRIPOD 3A50B51A (89905)		EA	1					
X1 00151		CLAMP 3A51A (89905)		EA	3				6	5
X1 00152		HEAD 3A50B (89905)		EA	1				6	4
X2 0 00153		HOUSING, LEG 15100-21 (89905)		EA	1				6	6
X2 0 00154		LOOP, BELT 15100-22 (89905)		EA	1		SEE	GRP	9901	6 15
X2 0 00155		NUT, PLAIN, HEXAGON 1A6A (89905)		EA	3				6	40
X2 0 00156		PIN, TRIPOD HEAD VSM12771-2-5X6 (89905)		EA	3				6	2

(1)	(2)	(3)	(4)	(5)	(6)				(7)		
SMR CODE	FEDERAL STOCK NUMBER	DESCRIPTION REF NUMBER & MFR CODE	USABLE ON CODE	UNIT OF MEAS	QTY INC IN UNIT	15-DAY MAINTENANCE (A)	ORGANIZATIONAL ALW (B)	(C)	(D)	ILLUS- TRATION (A) FIG NO	(B) ITEM NO
X2 0 00157		PLATE, LOCK: BELT LOOP MTG 15100-23 (89905)		EA	1		SEE	GRP	9901	6	17
X2 0 00158		SCREW: BELT LOOP MTG DIN88-4X8 (89905)		EA	2					6	14
X2 0 00159		SCREW, CENTER 1A37 (89905)		EA	1					6	43
X2 0 00160		SCREW: FIXING SCREW DIN551-2-6X3 (89905)		EA	1					6	42
X2 0 00161		SCREW, LEVELING: HEAD SCREW STOP CB1-3LX4-7 (89905)		EA	3					6	41
X2 0 00162		SCREW, MACHINE: CENTER WAHSEY MTG CAAL-6X10 (89905)		EA	1					6	38
X2 0 00163		SCREW, TRIPOD HEAD: HEAD CLAMP MTG 2A36B (89905)		EA	3					6	3
X2 0 00164		SCREW, TRIPOD HEAD: HOUSING TO LEG VSM12802-2-6X18 (89905)		EA	6					6	7
X2 0 00165		WASHER: THEODOLITE MTG 3A52B (89905)		EA	1					6	39
X2 0 00166		LEG ASSEMBLY: TRIPOD3 XT21-335MIL63 (89905)	ABC	EA	3						
X2 0 00167		BRACKET, BATTERY BOX 21B19 (89905)	ABC	EA	1	SEE	GRP	6717			
X2 0 00168		BRACKET, TRIPOD COVER 21B52S (89905)	ABC	EA	1					6	9
X2 0 00169		CLAMP ASSEMBLY 21B32-16B13 (89905)	ABC	EA	2						
X1 00170		CLAMP 21B32AS (89905)	ABC	EA	2					6	32
X1 00171		CLAMP PLATE 1B15A (89905)	ABC	EA	2					6	22
X1 00172		THUMBSCREW 16B13 (89905)	ABC	EA	2					6	20
X2 0 00173		CLAMP ASSEMBLY: LEG 15100-31-16B13 (89905)	ABC	EA	1						
X1 00174		CLAMP 15100-31 (89905)		EA	1					6	19
X1 00175		CLAMP, PLATE 1B15A (89905)		EA	1					6	22
X2 0 00176		LOOP, BELT 15100-22 (89905)		EA	1		SEE	GRP	9901	6	15
X2 0 00177		PLATE, LOCK: BELT LOOP SCREW 15100-23 (89905)		EA	1		SEE	GRP	9901	6	17
X1 00178		THUMBSCREW 16B13 (89905)		EA	1					6	20
X2 0 00179		COVER, TRIPOD HEAD 3A63A (89905)		EA	1					6	1
X2 0 00180		KIT, TRIPOD TOOL 2A20A23A (89905)		EA	1						
X2 0 00181		LEG ASSEMBLY, LOWER XT21-337 (89905)	ABC	EA	3						
X1 00182		LEG, WOOD 21B11 (89905)	ABC	EA	3					6	25
X2 0 00183		NUT: SHOE MTG 1A10 (89905)		EA	3					6	30

(1) SMR CODE	(2) FEDERAL STOCK NUMBER	(3) DESCRIPTION REF NUMBER & MFR CODE	(4) USABLE ON CODE	(5) UNIT OF MEAS	(6) QTY INC IN UNIT	(6) 15-DAY ORGANIZATIONAL MAINTENANCE ALW				(7) ILLUS- TRATION	
						(A)	(B)	(C)	(D)	(A) FIG NO	(B) ITEM NO
X1 00184		PLATE, STOP: INNER 21B15 (89905)	ABC	EA	3	1-5	6-20	21-50	51-100	6	44
X1 00185		PLATE, STOP: OUTER 21B14 (89905)	ABC	EA	3					6	23
X2 0 00186		SCREW, MACHINE: PLATE MTG DIN88-3X28 (89905)	ABC	EA	6					6	24
X2 0 00187		SCREW, PLAIN, HEXAGON: SHOE MTG BA5-8X30 (89905)		EA	3					6	31
X2 0 00188		SCREW, WOOD: SHOE MTG VSM12802-26X12 (89905)		EA	6					6	28
X1 00189		SHOE, TRIPOD: LOWER END 21B18S (89905)		EA	3					6	29
X2 0 00190		LEG ASSEMBLY, UPPER 21B12-13 (89905)	ABC	EA	3						
X1 00191		LEG, WOOD: LEFT HAND 21B12 (89905)		EA	3					6	36
X1 00192		LEG, WOOD: RIGHT HAND 21B13 (89905)		EA	3					6	37
P 0 00193	5210-238-3299	PLUMB BOB ASSEMBLY XT2-35A (89905)		EA	1		SEE	GRP	2202		
X2 0 00194		SCREW: BELT LOOP MTG DIN88-4X8 (89905)		EA	2					6	14
X2 0 00195		SCREW: CLAMP TO UPPER LEG DIN87-4X15 (89905)		EA	6					6	21
X2 0 00196		SCREW, TRIPOD HEAD: CLAMP TO UPPER LEG VSM12802-26X18 (89905)		EA	12					6	7
X2 0 00197		SCREW, TRIPOD LEG: STRAP MTG VSM12800-3-5X18 (89905)		EA	2					6	26
X2 0 00198		SCREW, WOOD: BRACKET MTG VSM12801-3X20 (89905)		EA	2		SEE	GRP	6717		
X2 0 00199		SCREW, WOOD: COVER BRACKET MTG VSM12801-3X20 (89905)		EA	2					6	10
X2 0 00200		SCREW, WOOD: TOOL KIT MTG VSM12802-2-6X12 (89905)		EA	4		SEE	GRP	2202		
X2 0 00201		STRAP, LEATHER 21B16 (89905)		EA	1					6	45
X2 0 00202		WASHER: STRAP MTG 8X4-2X0-5 (89905)	ABC	EA	2					6	27
P 0 00203	5120-378-9520	WRENCH, TRIPOD 3A29 (89905)		EA	1		SEE	GRP	2604		
X2 0 00204		SLING ASSEMBLY, CARRYING 15100-11 (89905)		EA	1						
X1 00205		BUCKLE, SLING HDS7-27 (89905)		EA	1					6	18
X1 00206		HOOK, SPRING HDH1-5 (89905)		EA	2					6	13
X1 00207		SLING, CARRYING HDB6-2-10 (89905)		EA	1					6	11
X1 00208		SLING, CARRYING HDB6-3-10 (89905)		EA	1					6	12
X2 0 00209		TRIPOD, SURVEYING 21BML67 (89905)		EA	1					6	

(1) SMR CODE	(2) FEDERAL STOCK NUMBER	(3) DESCRIPTION REF NUMBER & MFR CODE	(4) USABLE ON CODE	(5) UNIT OF MEAS	(6) 15-DAY ORGANIZATIONAL MAINTENANCE ALW				(7) ILLUS- TRATION		
					QTY INC IN UNIT	(A)	(B)	(C)	(D)	(A) FIG NO	(B) ITEM NO
X2 0 00210		CLAMP ASSEMBLY 21B32-33 (89905)		EA	2	1-5	6-20	21-50	51-100		
X2 0 00211		CLAMP ASSEMBLY, LEG 15100-31-21B33 (89905)		EA	1						
X2 0 00212		CLAMP PLATE 21B33 (89905)		EA	2						
X1 00213		CLAMP PLATE 21B33 (89905)		EA	1						
X2 0 00214		LEG ASSEMBLY, LOWER XT21-337A (89905)		EA	3						
X2 0 00215		LEG ASSEMBLY: TRIPOD XT21-33MIL67 (89905)		EA	3						
X2 0 00216		LEG ASSEMBLY, UPPER 21B12-13A (89905)		EA	3						
X1 00217		LEG, WOOD 21B11A (89905)		EA	3					6	25
X1 00218		LEG, WOOD, RIGHT HAND 21B13A (89905)		EA	3					6	37
X1 00219		PLATE, STOP, INNER 21B15A (89905)		EA	3					6	44
X1 00220		PLATE, STOP, OUTER 21B14A (89905)		EA	3					6	23
X2 0 00221		SCREW, MACHINE, PLATE MOUNTING DIN87-4X30 (89905)		EA	6					6	24
X2 0 00222		WASHER, STRAP MOUNTING DIN443-4-3 (89905)		EA	2					6	27
00223		GROUP 95 - GENERAL USE STANDARDIZED PARTS									
00224		9501 - BULK MATERIAL									
P 0 00225	4020-270-1659	CORD, LINEN		YD		*	*	*	*		
00226		GROUP 99 - PARTS PECULIAR									
00227		9901 - MULTI-LISTED PARTS									
P 0 00228	6675-859-5936	LAMP, BATTERY BOX		EA	7	1	4	8	16		
X2 0 00229		LOOP 15100-22 (89905)		EA	2						
X2 0 00230		PLATE 15100-23 (89905)		EA	2						

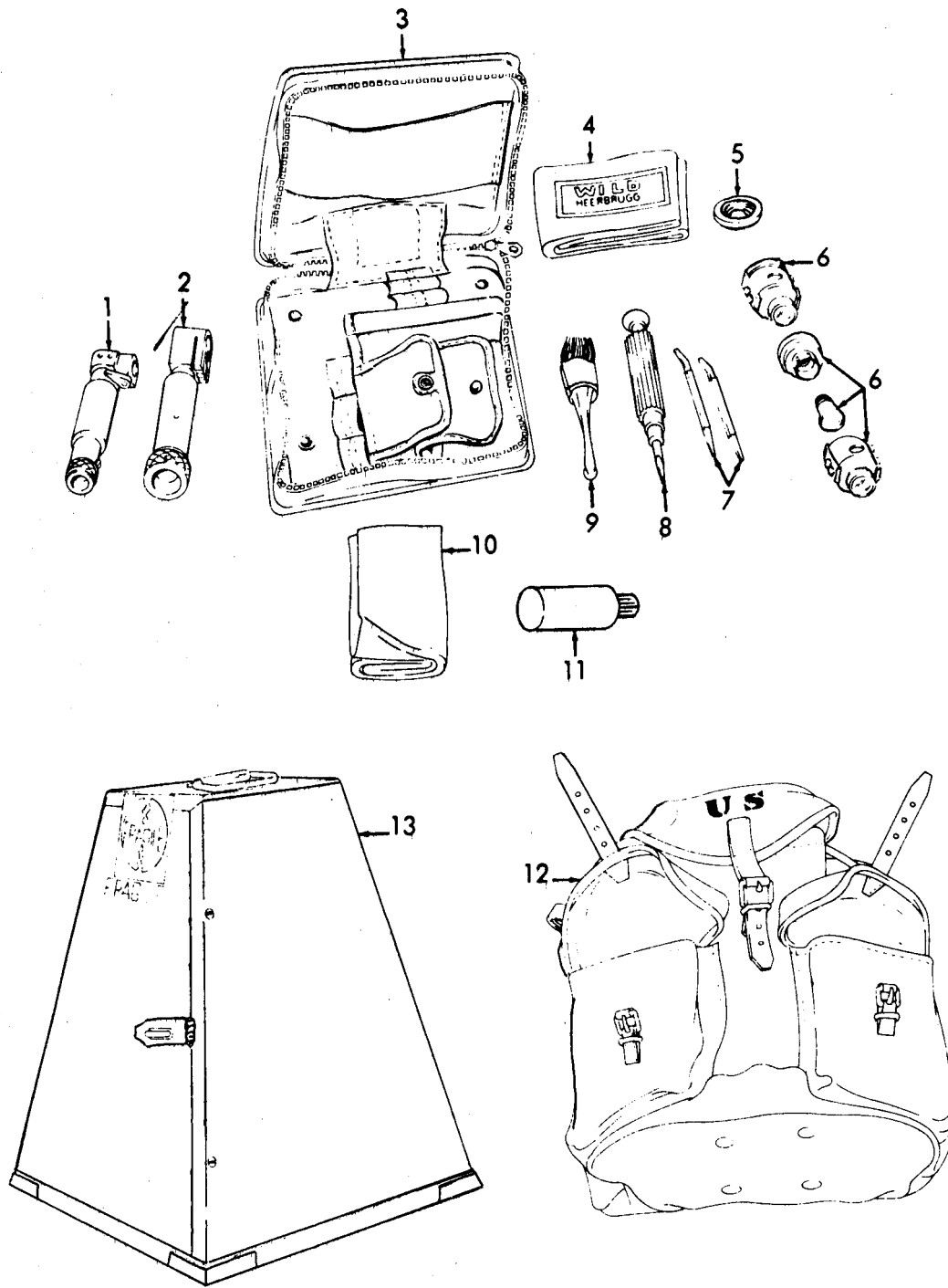


ME 6675-233-35P/1

Figure 1. Hood and Base.

INDEX TO PARTS, FIGURE 1

Reference Number	Functional Group	Item Name	Reference Number	Functional Group	Item Name
1	1808	SCREW	12	1808	WASHER
2	1808	CONTAINER	13	1808	NUT
3	1808	STRAP	14	1808	SCREEN
4	1808	HOOD AY	15	1808	WINDOW
5	1808	COLLAR	16	1808	RIVET
6	1808	COLLAR	17	1808	WASHER
7	1808	BASE	18	1808	LEVER
8	1808	PIN	19	1808	PIN
9	1808	BOLT	20	1808	SCREW
10	1808	LEVER	21	1808	CATCH
11	1808	WASHER			

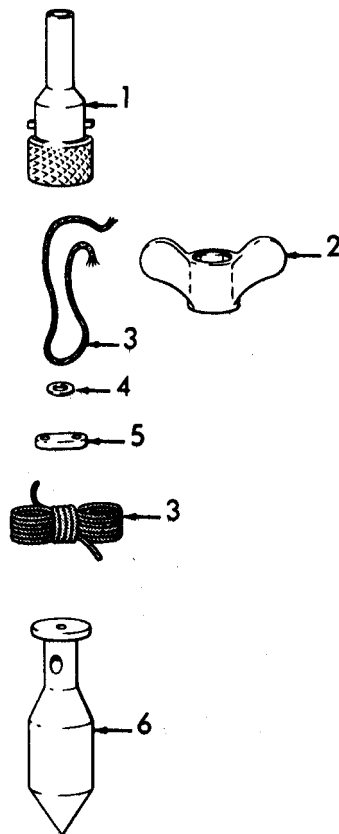


ME 6675-233-35P/2

Figure 2. Carrying and Accessory Case.

INDEX TO PARTS, FIGURE 2

Reference Number	Functional Group	Item Name	Reference Number	Functional Group	Item Name
1	6702	EYEPiece AY	7	2604	PIN
2	6702	EYEPiece AY	8	2604	SCREWDRIVER
3	2202	CASE	9	2202	BRUSH
4	2202	COVER	10	2202	CHAMOIS
5	6702	SUNGLASS- FILTER AY	11	2202	CONTAINER
6	6705	FITTING	12	1808	HAVERSACK
			13	1808	CASE

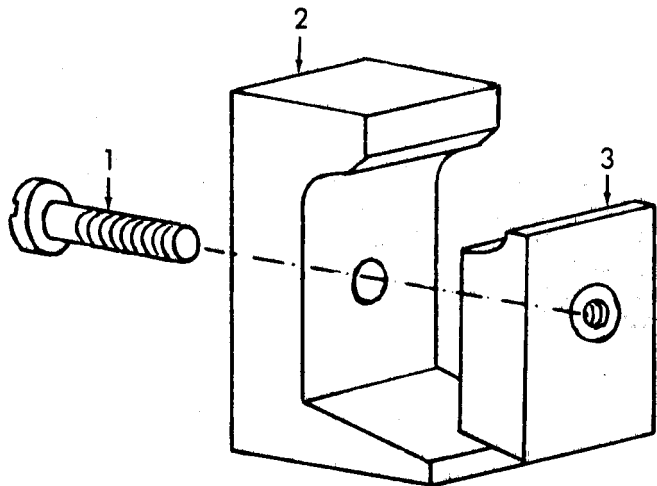


ME 6675-233-35P/3

Figure 3. Plumb Bob.

INDEX TO PARTS, FIGURE 3

Reference Number	Functional Group	Item Name
1	2202	BAYONET
2	2604	WRENCH
3	2202	CORD
4	2202	RING
5	2202	SLIDE
6	2202	PLUMB BOB

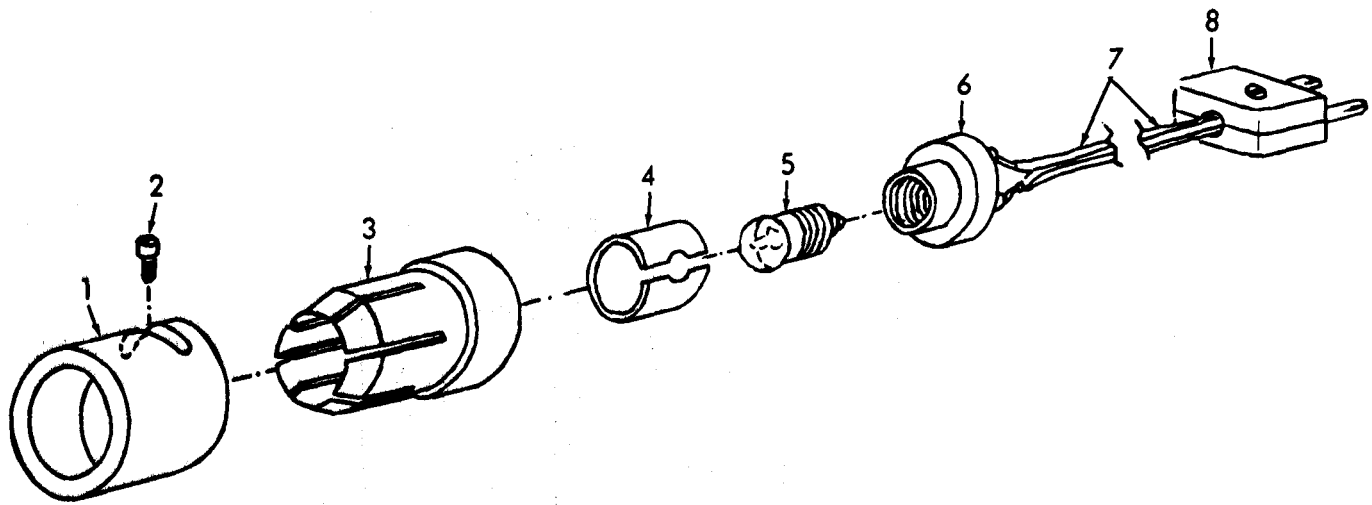


ME 6675-233-35P/5

Figure 4. Clamp Assembly For Symbol B.

INDEX TO PARTS, FIGURE 4

Reference Number	Functional Group	Item Name
1	6703	SCREW
2	6703	YOKE
3	6703	BLOCK

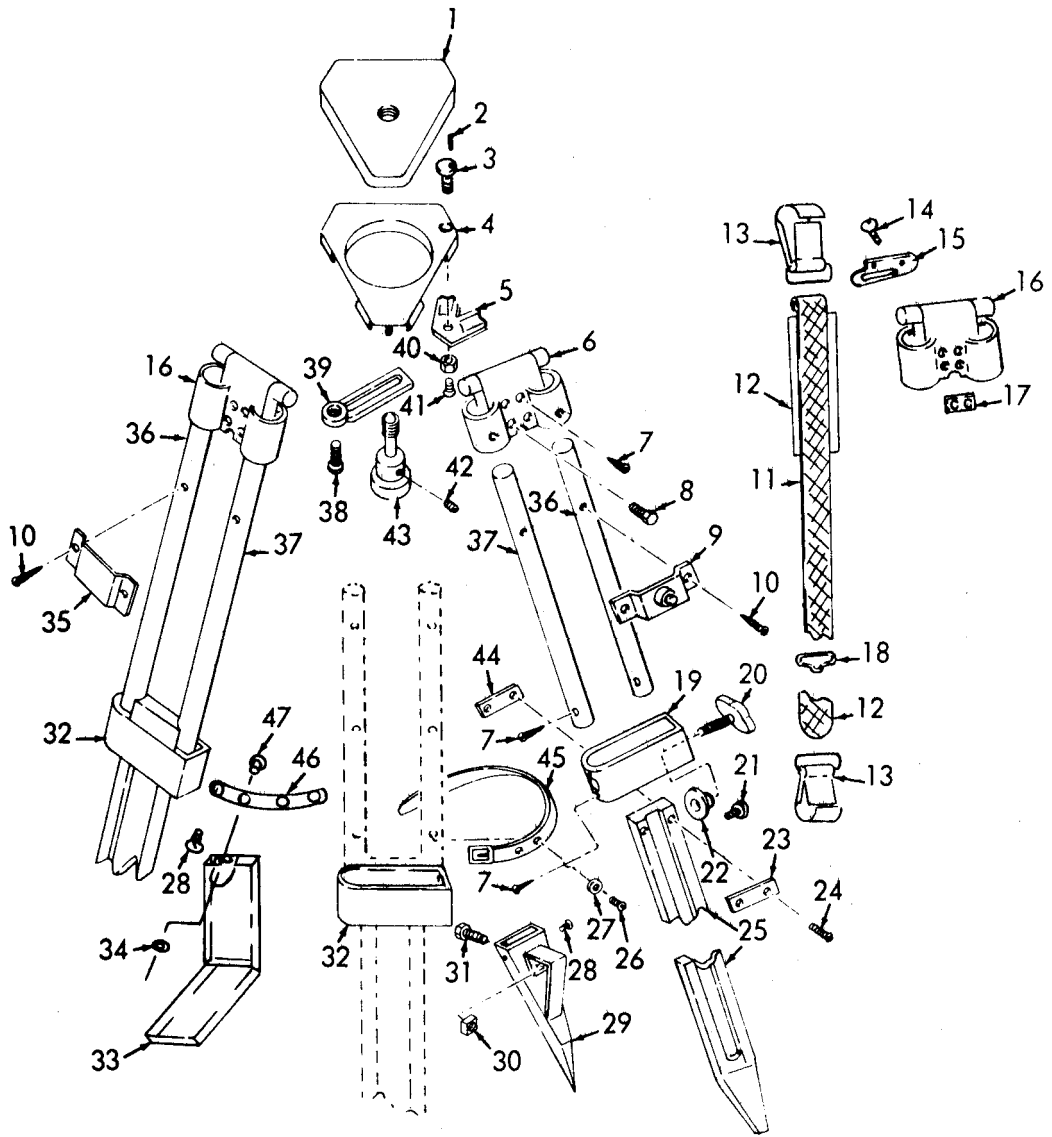


ME 6675-233-35P/6

Figure 5. Adapter Assembly, Eyepiece For Symbol B.

INDEX TO PARTS, FIGURE 5

Reference Number	Functional Group	Item Name
1	6703	SLEEVE
2	6703	SCREW
3	6703	CONNECTOR
4	6703	RING
5	6705	LAMP-INCANDESCENT
6	6703	SOCKET AY
7	6713	CABLE
8	6713	PLUG-MALE

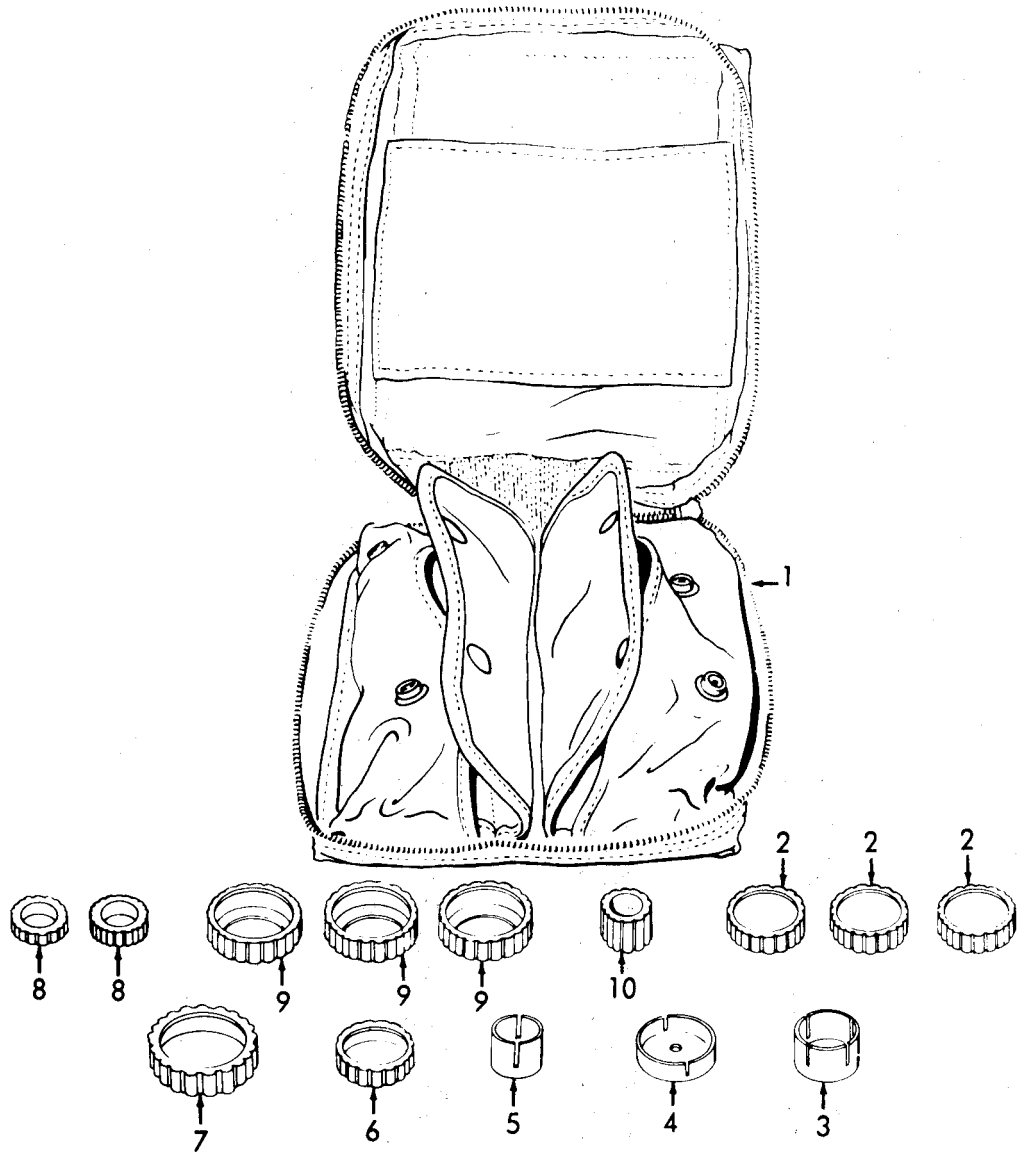


ME 6675-233-35P/34

Figure 6. Tripod.

INDEX TO PARTS, FIGURE 6

Reference Number	Functional Group	Item Name	Reference Number	Functional Group	Item Name
1	6719	COVER	25	6719	LEG
2	6719	PIN	26	6719	SCREW
3	6719	SCREW	27	6719	WASHER
4	6719	HEAD	28	2202	SCREW
5	6719	CLAMP	28	6719	SCREW
6	6719	HOUSING	29	6719	SHOE
7	6719	SCREW	30	6719	NUT
8	6719	BOLT	31	6719	SCREW
9	6719	BRACKET	32	6719	CLAMP
10	6719	SCREW	33	2202	KIT
11	6719	SLING	34	2202	WASHER
12	6719	SLING	35	6717	BRACKET
13	6719	HOOK	36	6719	LEG
14	6719	SCREW	37	6719	LEG
15	6719	LOOP	38	6719	SCREW
16	6719	CLAMP	39	6719	WASHER
17	6719	PLATE	40	6719	NUT
18	6719	BUCKLE	41	6719	SCREW
19	6719	CLAMP	42	6719	SCREW
20	6719	THUMBSCREW	43	6719	SCREW
21	6719	SCREW	44	6719	PLATE
22	6719	CLAMP PLATE	45	6719	STRAP
23	6719	PLATE	46	2202	BRACKET
24	6719	SCREW	47	2202	RIVET



ME 6675-233-35P/35

Figure 7. Winterization Equipment.

INDEX TO PARTS, FIGURE 7

Reference Number	Functional Group	Item Name	Reference Number	Functional Group	Item Name
1	2207	CASE	6	2207	COVER
2	2207	COVER	7	2207	COVER
3	2207	CAP	8	2207	COVER
4	2207	CAP	9	2207	COVER
5	2207	CAP	10	2207	COVER

SECTION V. INDEX-FEDERAL STOCK NUMBER AND REFERENCE NUMBER
CROSS-REFERENCE TO INDEX NUMBER

<u>STOCK NUMBER</u>	<u>INDEX NUMBER</u>	<u>STOCK NUMBER</u>	<u>INDEX NUMBER</u>
1440-936-8272	00129	6675-446-1762	00040
1440-961-9686	00096	6675-859-5936	00119
4020-270-1659	00057	6675-859-5936	00121
4020-270-1659	00225	6675-859-5936	00125
5120-378-9520	00005	6675-859-5936	00140
5120-378-9520	00203	6675-859-5936	00228
5120-961-2761	00004	6675-863-7471	00044
5120-961-2761	00046	6675-863-7471	00115
5210-238-3299	00055	6675-953-0013	00063
5210-238-3299	00193	6675-966-5788	00109
6135-120-1020	00113	6675-979-8744	00091
6135-997-4118	00432	6675-979-8744	00111
6150-378-9500	00143	6675-980-0115	00047
6240-269-0929	00122	6675-980-0115	00092
6240-775-6399	00123	6675-980-0116	00043
6675-353-4103	00003	6675-980-0116	00082
6675-353-4103	00045	6675-980-0117	00042
6675-353-4123	00028	6675-980-0117	00076
6675-378-9401	00041	6675-980-0118	00038
6675-378-9501	00124	7920-205-0565	00037
6675-378-9502	00132	8330-965-1722	00039
6675-413-2446	00088	9150-252-6382	00058

Deleted
by ch 1

<u>REFERENCE NO.</u>	<u>MFG CODE</u>	<u>INDEX NO.</u>	<u>REFERENCE NO.</u>	<u>MFG CODE</u>	<u>INDEX NO.</u>
BA1-8X17	89905	00148	GZOM2-04000	89905	00077
BA5-8X30	89905	00187	GZ004020	89905	00086
CAA1-6X10	89905	00162	GOF1-00000	89905	00093
CB1-3LX4-7	89905	00161	GOF1-00050	89905	00094
CB18-3LX4-7	89905	00019	GOF4-00000	89905	00047
DIN443-4-3	89905	00222	GOF4-00000	89905	00092
DIN551-2-6X3	89905	00160	HDB6-2-10	89905	00207
DIN63-2X5	89905	00018	HDB6-3-10	89905	00208
DIN674-3X7	89905	00033	HDF3-4	89905	00040
DIN733144X11X10	89905	00053	HDH1-5	89905	00206
DIN87-4X15	89905	00195	HDS1-2	89905	00028
DIN87-4X30	89905	00221	HDS7-27	89905	00205
DIN88-3X28	89905	00186	HDT1-11	89905	00021
DIN88-4X8	89905	00158	HDW1-2	89905	00004
DIN88-4X8	89905	00194	HDW1-2	89905	00046
EB125	89905	00130	HEG3-64	89905	00119
EB302	89905	00141	HEG3-64	89905	00121
EB303	89905	00139	HEG3-64	89905	00125
EB306A	89905	00138	HEG3-64	89905	00140
EB303	89905	00139	KKC300	81348	00039
EB324	89905	00134	LT405	89905	00020
EB325	89905	00437	MILB43363	81349	00037
EB326	89905	00436	MS15611-5	96906	00122
GEB10-000000	89905	00133	MS51957-15	96906	00107
GSE2	89905	00091	NT1-893	89905	00025
GSE2	89905	00111	NT1-894	89905	00026
GZOF00000	89905	00043	NT1-895	89905	00027
GZOF00000	89905	00082	NT2-283	89905	00016
GZOF040000	89905	00000	NT2-284A	89905	00014
GZOF04011	89905	00085	NT2-291B	89905	00030
GZOF04030	89905	00087	NT2-294A	89905	00023
GZOF04040	89905	00084	NT2-295A	89905	00015
GZOM1-04010	89905	00080	NT2-549	89905	00041
GZOM2-00000	89905	00042	NT2-571	89905	00008
GZOM2-00000	89905	00076	NT2-58A	89905	00090
GZOM2-01010	89905	00078	NT2-58A59B60A	89905	00088

Deleted
by ch 1

SECTION V. INDEX-FEDERAL STOCK NUMBER AND REFERENCE NUMBER
CROSS-REFERENCE TO INDEX NUMBER (Continued)

<u>REFERENCE NO.</u>	<u>MFG CODE</u>	<u>INDEX NO.</u>	<u>REFERENCE NO.</u>	<u>MFG CODE</u>	<u>INDEX NO.</u>
NT2-59B	89905	00089	10017414	09786	00106
TO-463A	89905	00022	10017416	09786	00105
TO-464	89905	00032	10017417	09786	00108
T1 -258	89905	00079	10010918	09786	00098
T2-635F	89905	00117	10010896	09786	00104
T2-636	89905	00120	10010897	09786	00102
T21 -131	89905	00118	10010898	09786	00099
T21-135	89905	00116	10102202	09786	00096
T21-142A	89905	00012	10102203	09786	00103
T21-1 43A	89905	00017	10102204	09786	00097
T21 -2A59MIL	89905	00109	10102205	09786	00100
T21 -201A	89905	00011	10102206	09786	00101
T21 -201 A1 42A	89905	00010	10194010	09786	00129
T21 -251 G	89905	00038	12-3-2X1	89905	00054
T21 -4W	89905	00044	12B27A28	89905	00059
T21 -4W	89905	00115	15100-11	89905	00204
T21-55	89905	00110	15100-21	89905	00153
T21 -65	89905	00127	15100-22	89905	00154
VSM12770-1X5	89905	00081	15100-22	89905	00176
VSM12770-2-5X24	89905	00013	15100-22	89905	00229
VSM12771 -2-5X6	89905	00156	15100-23	89905	00157
VSM12800-3-5X18	89905	00197	15100-23	89905	00177
VSM12801-3X20	89905	00144	15100-23	89905	00230
VSM12801-3X20	89905	00198	15100-31	89905	00174
VSM12801-3X20	89905	00199	15100-31-16B13	89905	00173
VSM12802-2-6X12	89905	00061	15100-31-21B-33	89905	00211
VSM12802-2-6X12	89905	00200	16B13	89905	00172
VSM12802-2-6X18	89905	00164	16B13	89905	00178
VSM12802-26X12	89905	00188	2A20A	89905	00052
VSM12802-26X18	89905	00196	2A20A23A	89905	00050
WK2ASSY	89905	00063	2A20A23A	89905	00180
WK2CC	89905	00067	2A23A	89905	00051
WK2CP	89905	00069	2A36B	89905	00163
WK2FS	89905	00070	21EMIL63	89905	00146
WK2HC	89905	00068	21EMIL67	89905	00209
WK2ME	89905	00064	21B11	89905	00182
WK2MM	89905	00071	21B11A	89905	00217
WK2SM	89905	00072	21B12	89905	00191
WK2TE	89905	00066	21B12-13	89905	00190
WK2VC	89905	00073	21B12-13A	89905	00216
WK20P	89905	00065	21B13	89905	00192
XT2-35A	89905	00055	21B13A	89905	00218
XT2-35A	89905	00193	21B14	89905	00185
XT2-68	89905	00029	21B14A	89905	00220
XT2-72	89905	00143	21B15	89905	00184
XT2-73	89905	00124	21B15A	89905	00219
XT2-74	89905	00132	21B16	89905	00201
XT2-75MIL63	89905	00147	21B18S	89905	00189
XT21-108MIL	89905	00009	21B19	89905	00142
XT21-109MIL	89905	00036	21B19	89905	00167
XT21-335MIL63	89905	00166	21B32-16B13	89905	00169
XT21-335MIL67	89905	00215	21B32-33	89905	00210
XT21-337	89905	00181	21B32AS	89905	00170
XT21-337A	89905	00214	21B33	89905	00212
1A10	89905	00183	21B33	89905	00213
1A37	89905	00159	21B52S	89905	00168
1A6A	89905	00155	3A11	89905	00149
1B15A	89905	00171	3A29	89905	00005
1B15A	89905	00175	3A29	89905	00203
10009795	09786	00123	3A3A	89905	00179

SECTOIN V. INDEX-FEDERAL STOCK NUMBER AND REFERENCE NUMBER
 CROSS-REFERENCE TO INDEX NUMBER (Continued)

<u>REFERENCE NO.</u>	<u>MFG CODE</u>	<u>INDEX NO.</u>	<u>REFERENCE NO.</u>	<u>MFG CODE</u>	<u>INDEX NO.</u>
3A39A	89905	00060	3A55	89905	00003
3A50B	89905	00152	3A55	89905	00045
3A50B51A	89905	00150	3A56	89905	00049
3A51A	89905	00151	6X3-2X0-5	89905	00024
3A52B	89905	00165	8X4-2X0-5	89905	00202
3A54B	89905	00048			

By Order of the Secretary of the Army:

Official:

KENNETH G. WICKHAM,
*Major General, United States Army,
The Adjutant General.*

W. C. WESTMORELAND,
*General, United States Army,
Chief of Staff.*

Distribution:

To be distributed in accordance with DA Form 12-25, Sec I (qty rqr Block #174), Organizational maintenance for Surveying Equipment: Theodolite.

☆ U. S. GOVERNMENT PRINTING OFFICE: 1970-397-097/729

RECOMMENDED CHANGES TO EQUIPMENT TECHNICAL PUBLICATIONS



THEN...JOT DOWN THE DOPE ABOUT IT ON THIS FORM. CAREFULLY TEAR IT OUT, FOLD IT AND DROP IT IN THE MAIL.

SOMETHING WRONG WITH PUBLICATION

FROM: (PRINT YOUR UNIT'S COMPLETE ADDRESS)

DATE SENT

PUBLICATION NUMBER

PUBLICATION DATE

PUBLICATION TITLE

BE EXACT PIN-POINT WHERE IT IS

PAGE NO.

PARA-GRAPH

FIGURE NO.

TABLE NO.

IN THIS SPACE, TELL WHAT IS WRONG AND WHAT SHOULD BE DONE ABOUT IT.

TEAR ALONG PERFORATED LINE

PRINTED NAME, GRADE OR TITLE AND TELEPHONE NUMBER

SIGN HERE

THE METRIC SYSTEM AND EQUIVALENTS

WEIGHT MEASURE

1 Centimeter = 10 Millimeters = 0.01 Meters = 0.3937 Inches
 1 Meter = 100 Centimeters = 1000 Millimeters = 39.37 Inches
 1 Kilometer = 1000 Meters = 0.621 Miles

WEIGHTS

1 Gram = 0.001 Kilograms = 1000 Milligrams = 0.035 Ounces
 1 Kilogram = 1000 Grams = 2.2 lb.
 1 Metric Ton = 1000 Kilograms = 1 Megagram = 1.1 Short Tons

LIQUID MEASURE

1 Milliliter = 0.001 Liters = 0.0338 Fluid Ounces
 1 Liter = 1000 Milliliters = 33.82 Fluid Ounces

SQUARE MEASURE

1 Sq. Centimeter = 100 Sq. Millimeters = 0.155 Sq. Inches
 1 Sq. Meter = 10,000 Sq. Centimeters = 10.76 Sq. Feet
 1 Sq. Kilometer = 1,000,000 Sq. Meters = 0.386 Sq. Miles

CUBIC MEASURE

1 Cu. Centimeter = 1000 Cu. Millimeters = 0.06 Cu. Inches
 1 Cu. Meter = 1,000,000 Cu. Centimeters = 35.31 Cu. Feet

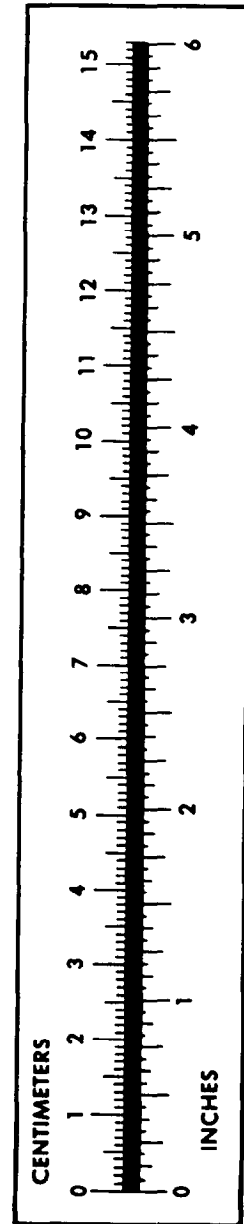
TEMPERATURE

$5/9(^{\circ}\text{F} - 32) = ^{\circ}\text{C}$
 212° Fahrenheit is equivalent to 100° Celsius
 90° Fahrenheit is equivalent to 32.2° Celsius
 32° Fahrenheit is equivalent to 0° Celsius
 $9/5^{\circ}\text{C} + 32 = ^{\circ}\text{F}$

APPROXIMATE CONVERSION FACTORS

TO CHANGE	TO	MULTIPLY BY
Inches	Centimeters	2.540
Feet	Meters	0.305
Yards	Meters	0.914
Miles	Kilometers	1.609
Square Inches	Square Centimeters	6.451
Square Feet	Square Meters	0.093
Square Yards	Square Meters	0.836
Square Miles	Square Kilometers	2.590
Acres	Square Hectometers	0.405
Cubic Feet	Cubic Meters	0.028
Cubic Yards	Cubic Meters	0.765
Fluid Ounces	Milliliters	29.573
its	Liters	0.473
arts	Liters	0.946
allons	Liters	3.785
Ounces	Grams	28.349
Pounds	Kilograms	0.454
Short Tons	Metric Tons	0.907
Pound-Feet	Newton-Meters	1.356
Pounds per Square Inch	Kilopascals	6.895
Miles per Gallon	Kilometers per Liter	0.425
Miles per Hour	Kilometers per Hour	1.609

TO CHANGE	TO	MULTIPLY BY
Centimeters	Inches	0.394
Meters	Feet	3.280
Meters	Yards	1.094
Kilometers	Miles	0.621
Square Centimeters	Square Inches	0.155
Square Meters	Square Feet	10.764
Square Meters	Square Yards	1.196
Square Kilometers	Square Miles	0.386
Square Hectometers	Acres	2.471
Cubic Meters	Cubic Feet	35.315
Cubic Meters	Cubic Yards	1.308
Milliliters	Fluid Ounces	0.034
Liters	Pints	2.113
Liters	Quarts	1.057
ers	Gallons	0.264
ms	Ounces	0.035
ograms	Pounds	2.205
Metric Tons	Short Tons	1.102
Newton-Meters	Pounds-Feet	0.738
Kilopascals	Pounds per Square Inch	0.145
ometers per Liter	Miles per Gallon	2.354
ometers per Hour	Miles per Hour	0.621



PIN: 026296-001